

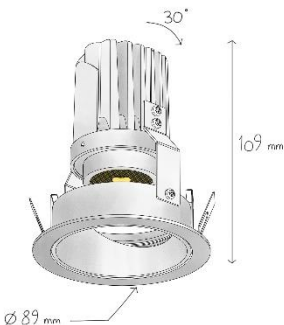
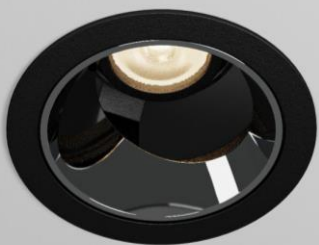
Nian

Ceiling Recessed



Nian

Ceiling Recessed



| | |
|-----------------------|---------------|
| CODE | F130 |
| Light source | LED |
| Power (W) | 9 |
| luminous flux (lm) | 990 |
| Color Rendering (Ra) | >80 |
| Color Temperature (K) | 3000 4000* |
| Body Color | White Black |

IP 20 80 mm

Supply Voltage:
220-240 Vac, 50 Hz

Driver:
DALI | Dimmable version available upon request

Recommended Applications:
Residential | Office | Shop

*Customized body colors and other color temperatures (CCTs) are available upon request

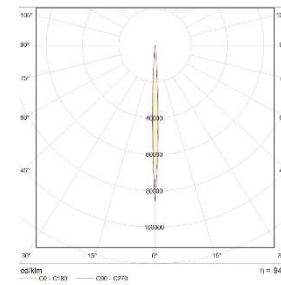
The specific design of the lower frame with its strip reduces the direct view of the light spot and glare



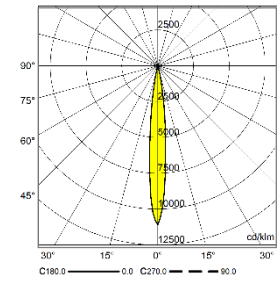
ALBORZ CERAMIC
SINCE 1973

Nian

Light distributions



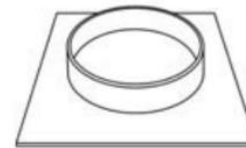
Extreme Spot (XS)



Spot (S)

Accessories

Optional





Recessed Kit

Order code: 2130924125



Order code table

| Body Color | 3000K  | Beam Angle | 4000K  | Body Color |
|------------|---|--------------|---|------------|
| White | F130W930XS | Exrteme Spot | F130W940XS | White |
| | F130W930S | Spot | F130W940S | |
| Black | F130B930XS | Extreme Spot | F130B940XS | Black |
| | F130B930S | Spot | F130B940S | |